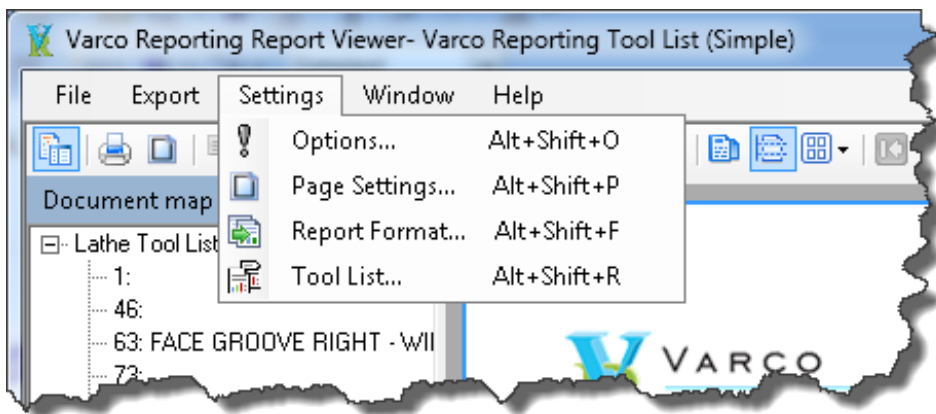


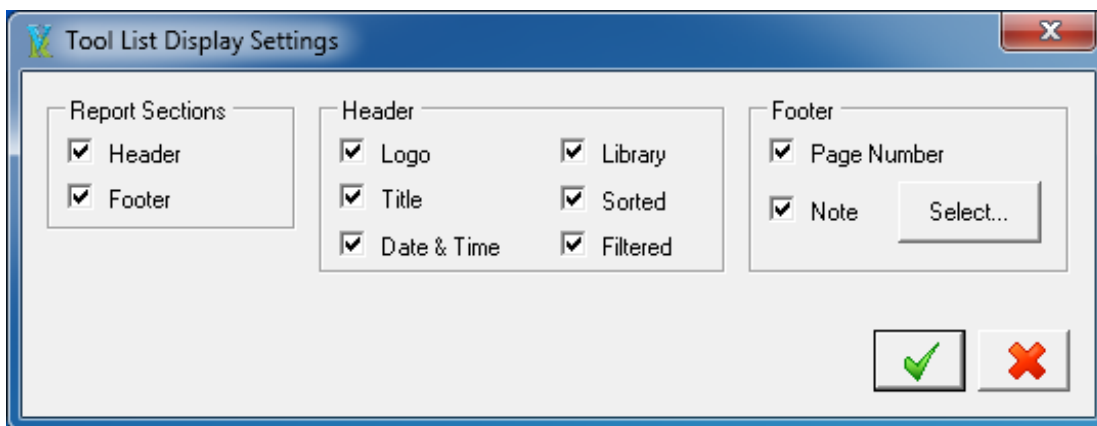
Select the “View / Download Options for All Reports” PDF for additional information.

The Tool List is launched exactly the same way as the Tool List reports installed with Mastercam, either from the Tool Manager or Operations Manager.

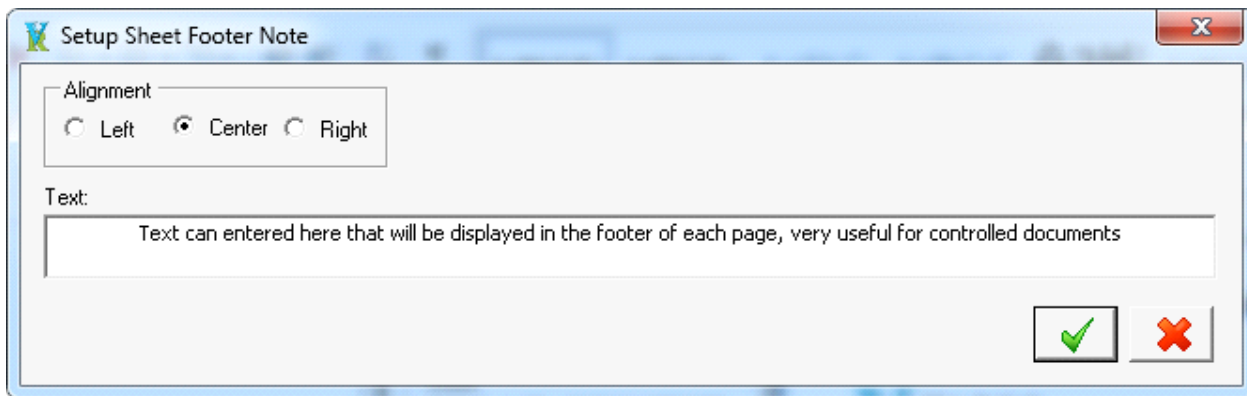
The following screenshots are from dialogs available from the Viewer Settings menu:



The “Tool List” dialog provides options to configure the report to display the way the user wants it to. Checkboxes allow the user to enable or disable all aspects of the displayed report.



The "Tool List" dialog has an option for the user to set text to be displayed in the footer of each report page, and to align the text. This is very useful for shops that have controlled documents:



The image shows a Windows-style dialog box titled "Setup Sheet Footer Note". It has a standard title bar with a close button (X) in the top right corner. The dialog contains two main sections. The first section is labeled "Alignment" and contains three radio buttons: "Left", "Center", and "Right". The "Center" radio button is selected. The second section is labeled "Text:" and contains a text input field with the placeholder text "Text can entered here that will be displayed in the footer of each page, very useful for controlled documents". At the bottom right of the dialog, there are two buttons: a green checkmark button and a red X button.

All of the settings from the Tool List dialog are saved.