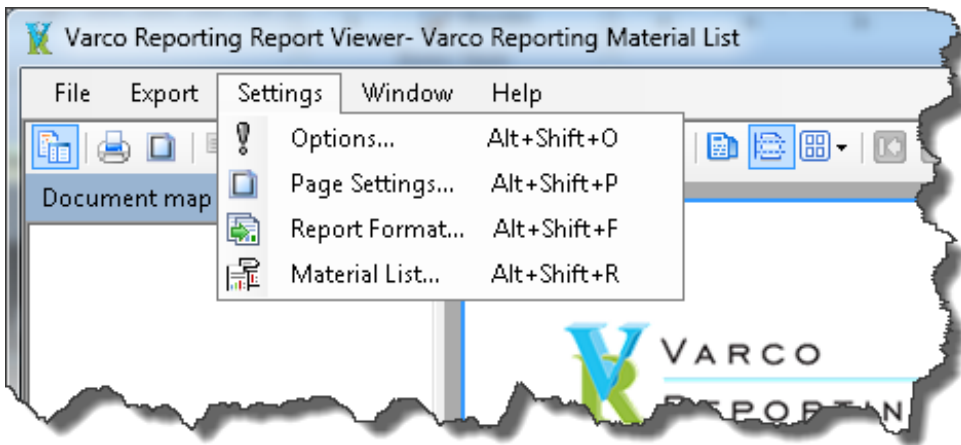


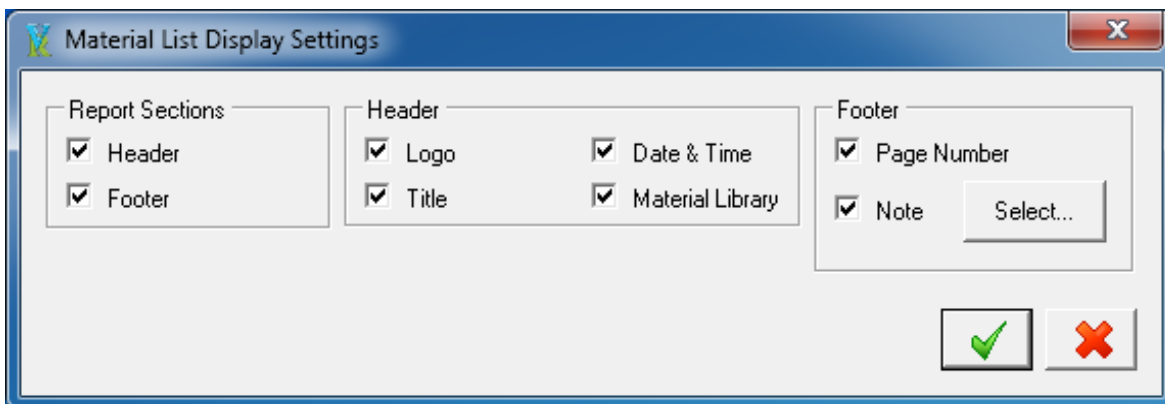
## *Material List*

The Material List report is launched exactly the same way as the Material List report installed with Mastercam.

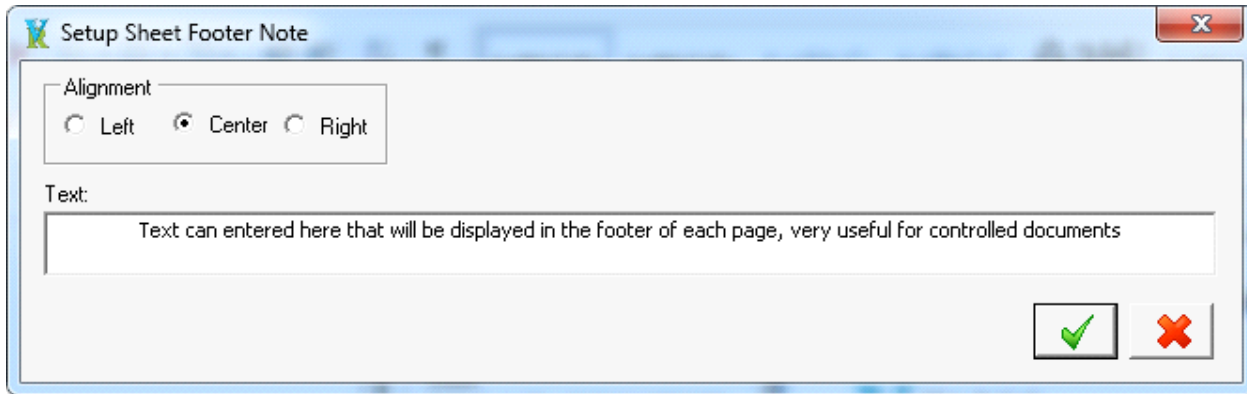
The following screenshots are from dialogs available from the Viewer Settings menu:



The “Material List” dialog provides options to configure the report to display the way the user wants it to. Checkboxes allow the user to enable or disable all aspects of the displayed report.



The “Material List” dialog has an option for the user to set text to be displayed in the footer of each report page, and to align the text. This is very useful for shops that have controlled documents:



Setup Sheet Footer Note

Alignment

☐ Left ☒ Center ☐ Right

Text:

Text can entered here that will be displayed in the footer of each page, very useful for controlled documents

All of the settings from the Material List dialog are saved.